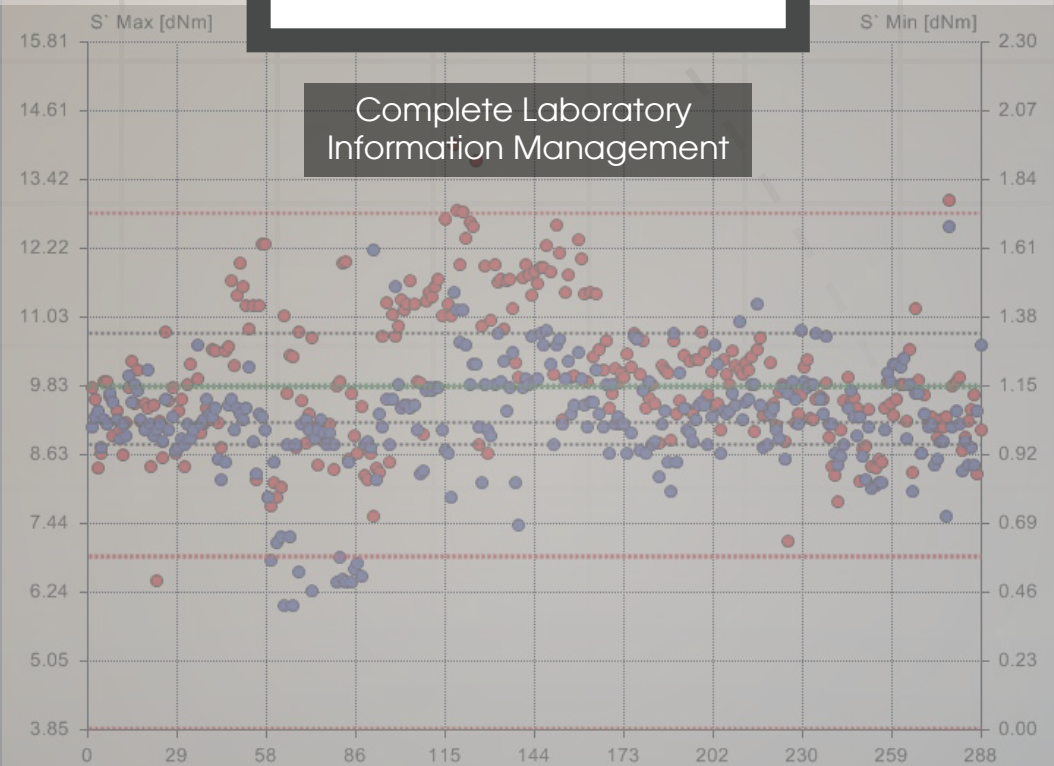


**MonTech<sup>®</sup>**  
**Rubber Testing Solutions**

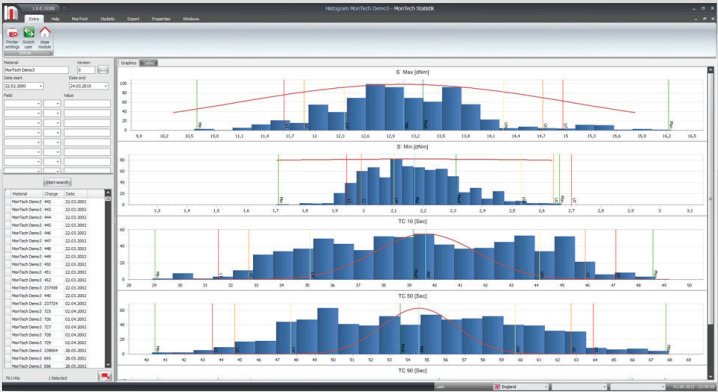
Complete Laboratory  
Information Management



S' Min	S' Max	TC 0	TC 10	TC 90	Time to Peak Rate (S')	Time@E nd of Test	S' @Peak Rate	Final Tempera ture	Peak Rate (S'/mi
1,50	21,00	n/a	78,00	162,00	97,20	0,00	9,03	0,00	27
1,32	19,46	n/a	70,00	156,00	94,20	0,00	8,77	0,00	27
1,16	18,00	n/a	62,00	150,00	91,20	0,00	8,51	0,00	27
1,00	16,54	n/a	54,00	144,00	88,20	0,00	8,25	0,00	20
0,85	15,00	n/a	46,00	138,00	85,20	0,00	7,99	0,00	19
0,69	13,46	n/a	38,00	132,00	82,20	0,00	7,73	0,00	18
0,50	11,92	n/a	30,00	126,00	79,20	0,00	7,48	0,00	17
dNm	dNm		Sec	Sec	Sec	Sec	dNm	°C	dNm

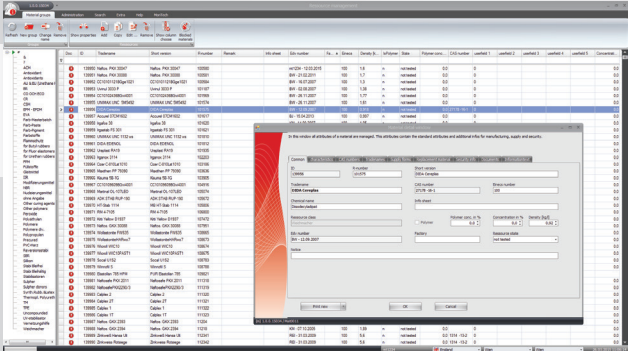
**MonTech** LIMS Software

# MonStat



## Statistical Process Control (SPC) Software

In order to transform data into actionable information, MonStat offers the most powerful analytical techniques by joining data retrieved from a LIMS database system with data collected from production machinery on the shop floor. MonStat is a dynamic and adaptable SPC software featuring both realtime and historical data analysis to help users improve product quality and optimize manufacturing or laboratory processes.

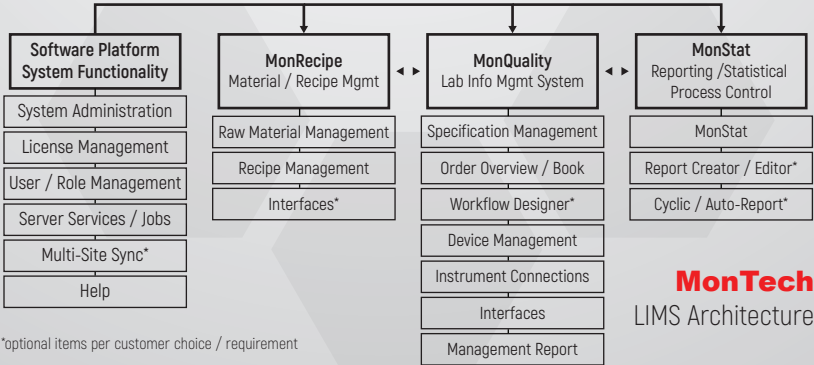


# MonRecipe

## Software for Compound and Material Management

MonRecipe is a dynamic workbench for storing, modifying, and maintain-

ing all information for active recipes while optimizing raw material and process costs. MonRecipe is the ideal solution to streamline the recipe and formulation development process, adding integrated capabilities for single-stage, multi-stage and trial mixing, masterbatch management, production upscaling, management of recipe specifications and acquired laboratory data and test results.

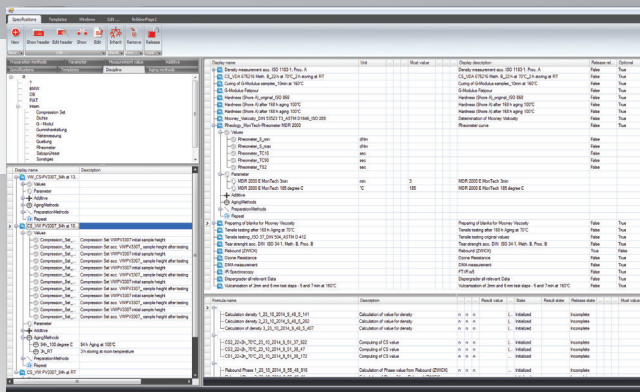


\*optional items per customer choice / requirement

# MonQuality







## A fully integrated Laboratory Information Management System (LIMS)

Designed specifically for the rubber and polymer industry, MonQuality is a home-grown LIMS system for collecting and managing all data collected in a laboratory. MonQuality has the most advanced collaborative capabilities between multiple laboratories, or factories to ensure test specifications, and data collection is processed smoothly.



## The MonTech LIMS Software Package

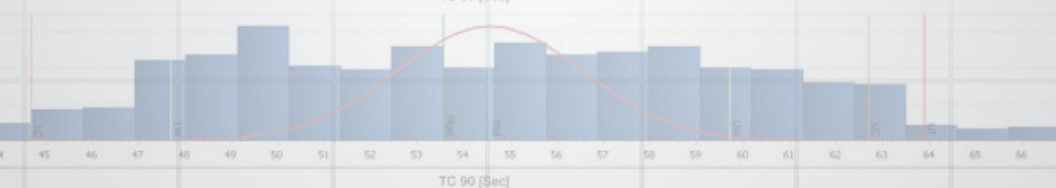
### Advantages of the LIMS Package

-  All software integrates with one another or can be used as standalone
-  Manage / organize / sync data from multiple laboratories or sites
-  Develop custom report templates that focus on important data
-  Manage recipes, test plans, and specifications with version management
-  Increase production efficiency and quality through built in SPC
-  Complete solution for QC and R&D information management



# MonTech®

**Rubber Testing Solutions**



Products

Software

Support

Learn more at  
[www.montechusa.com](http://www.montechusa.com)  
1-800-552-5115